



HOSPITAL & PRESSURE CARE

Supporting best practice outcomes Nationwide.

---

# Mattress & Cushion User Guide



EQUAGEL

ROHO

---

QLD Ward Guide

**For Hires / Sales / Collections & Servicing Support**



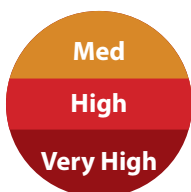
1300 516 174



Hospital@ilsau.com.au

## Product Guide Mattresses

### Quattro Plus



Suitable for medium  
to very high risk patients

- Pressure injury stage 1 - 6
- 1in 4 cell cycle
- Low profile - 180mm



**SWL**

0kgs – 200kgs

### Quattro Acute



Suitable for  
very high risk patients

- Pressure injury stage 1 - 6
- History of pressure injury
- Inability to reposition or move
- 1in 4 cell cycle
- Deep cell therapy
- High profile - 240mm



**SWL**

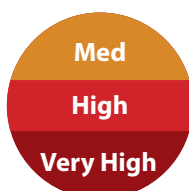
0kgs – 250kgs

Please Call For Information On  
Bariatric Mattress and equipment  
**1300 516 174**

# Product Guide Mattresses

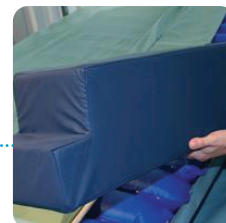
## Quattro Sentinel

Specifically Designed For The Care Of Bariatric Patients



Suitable for medium to very high risk patients

- Pressure injury stage 1 - 6
- 1 in 4 cell cycle
- Adjustable bolster system
- Available in two width (1070mm & 1200mm)



 **SWL**  
0kg - 370kg

## Set Up of a Talley Air Mattress



- 1** Roll out mattress onto the bed frame and plug power cord into power point on the wall. Ensure the CPR release dial is locked.

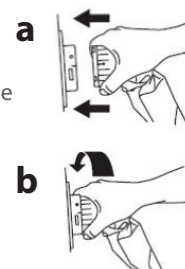


- 2** Hook pump onto the end of the bed. To engage the hooks on the back of the pump, press down and twist.



- 3** **Attach the umbilical cord to the power unit** by aligning the **GREEN DOT** on the umbilical cord connector with the **BLACK LINE** on the power unit connector and pushing together.

Rotate the umbilical cord connector clockwise until the green indicator fills the indicator hole on the power unit.



- 4** **Connect power lead** to the pump on the left hand side and switch the pump on, using black switch



- 5** **Inflate**  
The mattress will inflate within 15-20 minutes for the Plus, 30 minutes for the Acute. You can inflate with patient on, but this is not recommended.

The pump will display STARTING. Then INITIALISING whilst the mattress inflates.



- 6** **Settings**  
Once inflated, the mattress will automatically default to "Active Medium". The pump is locked. To unlock the pump, hold down the mute/unlock button for 3 secs.








Comfort Settings:

- **Soft Setting** for patients with low BMI (approx. less than 45kg), bony prominences, paediatrics or patients who prefer a softer mattress.
- **Medium Setting** Default setting, recommended for most patients
- **Firm Setting** for patients with high BMI (approx. above 120-150kg), too much immersion, or patients who prefer a firmer mattress.

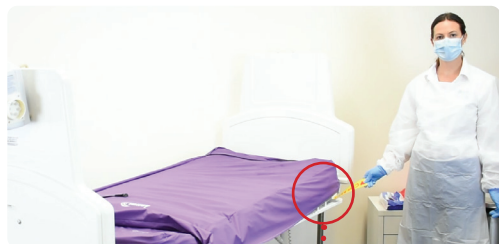
# Operational Instructions

## Functional Settings

<b>Therapy Mode</b> (Static/Active Mode)		<p><b>Therapy Mode:</b></p> <p>Pressing the THERAPY MODE button will switch from ACTIVE (1 in 4 alternating cell cycle) to CONTINUOUS LOW PRESSURE/ STATIC therapy mode. Hold down the THERAPY MODE button for 2 seconds until the audible tone is heard. The system will then display 'PLEASE WAIT' and requires approximately 2 minutes to initialise.</p> <p><i>Recommended for burns, palliative care, motion sickness and nausea</i></p>
<b>Comfort Control</b>		<p><b>Comfort Controls:</b></p> <p>The automatic default setting is ACTIVE MEDIUM. Increase or decrease the comfort settings by unlocking the pump and using the UP and DOWN arrow buttons (SOFT/MEDIUM/FIRM). This is NOT weight dependent, so settings are purely for therapeutic and comfort adjustments.</p>
<b>Data</b>		<p><b>Information:</b></p> <p>This button will not need to be used on the ward and does not affect mode of operation. Contains information about the pump's servicing history.</p>
<b>Mute / Unlock</b>		<p><b>Mute / Unlock/Fault Reset:</b></p> <ul style="list-style-type: none"> <li>• <b>MUTE:</b> Press to silence the alarm and to clear the alarm display from the display screen.</li> <li>• <b>UNLOCK:</b> The power unit will automatically lock 2 minutes after the last button operation to prevent the inadvertent operation of button functions. This is indicated by a Padlock symbol on the bottom right of the LCD screen. Press and hold the MUTE/UNLOCK button for 3 seconds to unlock the LCD screen.</li> <li>• <b>FAULT/PUMP RESET:</b> Press after a fault has been identified to reset pump. If the fault is not fixed, then the pump will re-alarm after 2 minutes. Call our pressure care phone line for support (1300 516 174).</li> </ul>
<b>Max Inflate</b>		<p><b>Max Inflate:</b></p> <p>This may be necessary for some nursing procedures (transfers, ADL's, bathing, repositioning, wound dressings)</p> <p>The MAX INFLATE mode inflates the mattress to maximum static pressure for a period of 15 minutes. After 15 minutes the system automatically returns to the previous mode of operation.</p>



## Operational Instructions



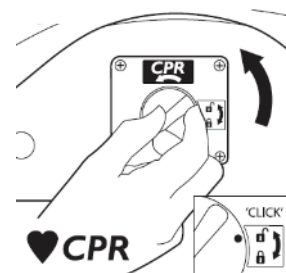
### CPR Release:

Situated at the head end of the mattress, on the right-hand side (viewed from the foot end).

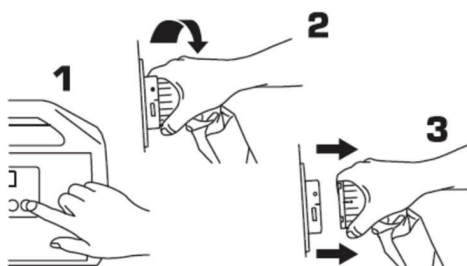
**Please Note; The Yellow CPR Tag Is An Indicator – Not The CPR Release.**

For rapid deflation rotate the dial of the CPR release anti-clockwise to click into the open position.

If re-inflating the mattress, make sure the dial of the CPR release is rotated clockwise until it clicks into the closed position.



### Transport Mode:



To stop the mattress deflating when transporting a patient around your facility



To prevent the mattresses from deflating in case of power outage

- Press MAX. Inflate button for a longer transport time. Or keep on current setting.
- Rotate the umbilical cord and detach the cord from the pump. Make sure the valves are closed by twisting the top of the cord.
- The mattress will remain inflated supporting the patient for at least 12-15 hours (weight dependent).



## Pack Down of a Talley Air Mattress



- 1 Stop hire using the online/or phone Ordering system – on the day the patient is discharged



- 2 Turn pump off and press the pump's mute button.



- 3 Deflate the mattress by opening the CPR dial located at the head-end of the mattress. You can also undo the umbilical cord for a more rapid deflation. (Twist the top to ensure the valves are open).



- 4 Place the umbilical cord across the bottom of the mattress and fold in the power cord ensuring the plug is facing outwards to prevent damage to the mattress.



- 5 Roll the mattress, foot end first, keeping the umbilical cord within the roll. Press down on the mattress to assist with air deflation as it is rolled up the bed.



- 6 Place the mattress in the red bag. (The red bag will be supplied by ILS)



- 7 Place the pump inside the bag and tie up.

# Infection Control Policy

All staff must follow this policy, should the patient be identified as "infected" (MRSA, C-DIFF, VRE, COVID-19)



## All Mattresses Must Be Bagged Before They Leave The Room



- 1 Place the mattress in the red bag, then place the pump on top of the mattress, inside the bag. The red bags will be supplied by ILS



- 2 Tie the bag



- 3 Place in the designated collection point



- 4 Upon collection, ILS staff will double bag mattress.

Please Advise Our Friendly Staff If You Require More Red Bags,  
Otherwise Call 1300 516 174



## DO NOT REUSE THE MATTRESS

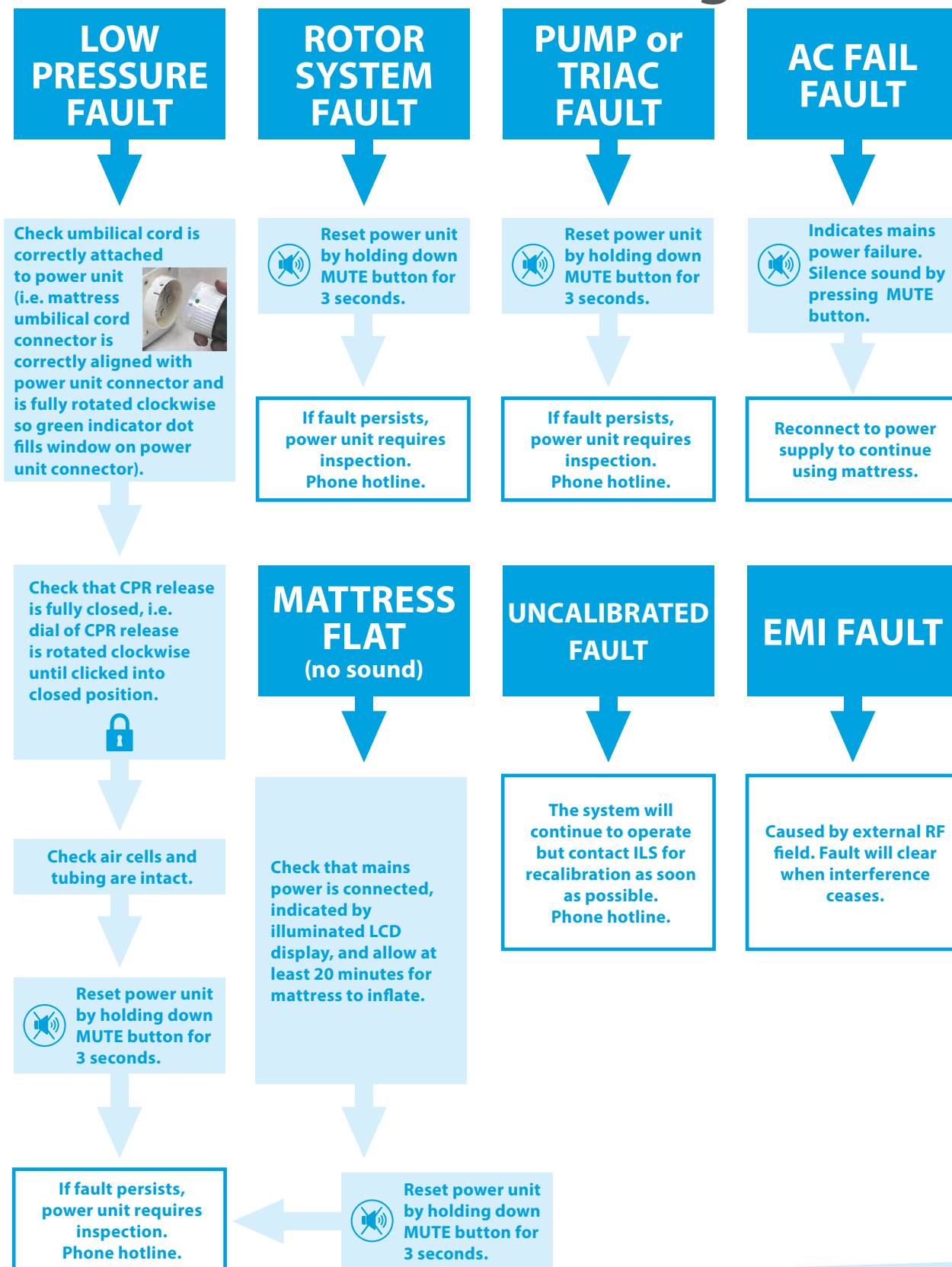
Collection will be made within 24 hours from time of stop-hire.



The Talley Air Mattresses are 100% machine washable in our ISO certified laundries, killing 99.99% of all bacteria.



## Trouble Shooting



## Product Guide Cushions

### Equagel



**At  
Risk**

Suitable for at risk patients

- No current or previous history of pressure injury
- Preventative ONLY



**SWL**

0kgs – 200kgs

### Roho

High Profile



Low Profile



**Med  
High  
Very High**

Suitable for Medium to Very High Risk patients

- Pressure injury stage 1 - 4
- History of pressure injuries



**SWL**

Unlimited  
(consult ILS 200kgs+)

## Cushion Set Up

### How to set up an **EQUAGEL** Cushion



- 1 Simply ensure the contoured pelvic area is located towards the back of the seat

Check side panel of cover for correct orientation



← Front

Back →



- 2 Check both feet are comfortably on the floor. Adjust chair height if required.

## Cushion Set Up

How to set up a High Profile & Low Profile **ROHO** Cushion



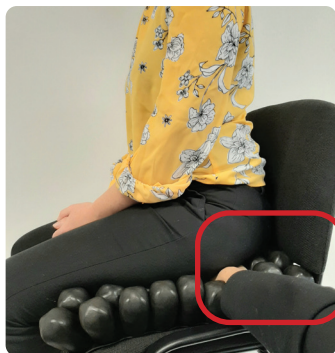
- 1 Place cushion on chair, with air valve accessible at the front. Open valve anti-clockwise



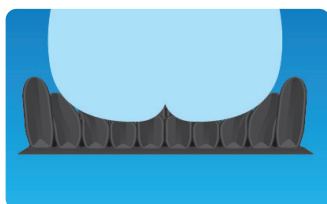
- 2 Slide the air pump's rubber nozzle over the valve and inflate the cushion, until it begins to slightly arch upward, close valve by turning clockwise. ( Please note your cushion may have already been inflated like this)



- 3 Sit patient on cushion. They will be sitting on top of the air cells. Air must now be released to position patient correctly.



- 4 Slide your hand between the cushion's surface and the patient's bottom, to locate the lowest bony prominence (ischial tuberosity)

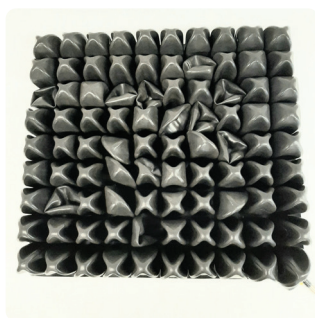


- 5 While keeping your hand under the bony prominence, open the ROHO air valve and let air escape. Continue to let air out until you can feel about 1.5cm - 2.5cm between the patient and the base of the cushion. The person will feel themselves sink into the cushion.

Close the air valve by turning clockwise.



- 6 Check both feet are comfortably on the floor. Adjust chair height if required.



**Note:** The correctly set up cushion will look slightly deflated. This is normal.

Do not adjust air unless patient is less than 1.5cm from base. If cells look full with nobody on the cushion, it is likely that it is over-inflated.

Remember **"IN IT, NOT ON IT"**

## Key Contacts

### *Education, Training & Support*



**Jessica Scully**

Occupational Therapist  
National Manager  
Hospital and Pressure Care

-----  
Jessica.Scully@ilsau.com.au  
0401 082 415



**Simon Rogers**

Business Development Manager  
Hospital and Pressure Care

-----  
Simon.Rogers@ilsau.com.au  
0468 928 516

## For Equipment Hires & Purchasing



**1300 516 174**



**Hospital@ilsau.com.au**